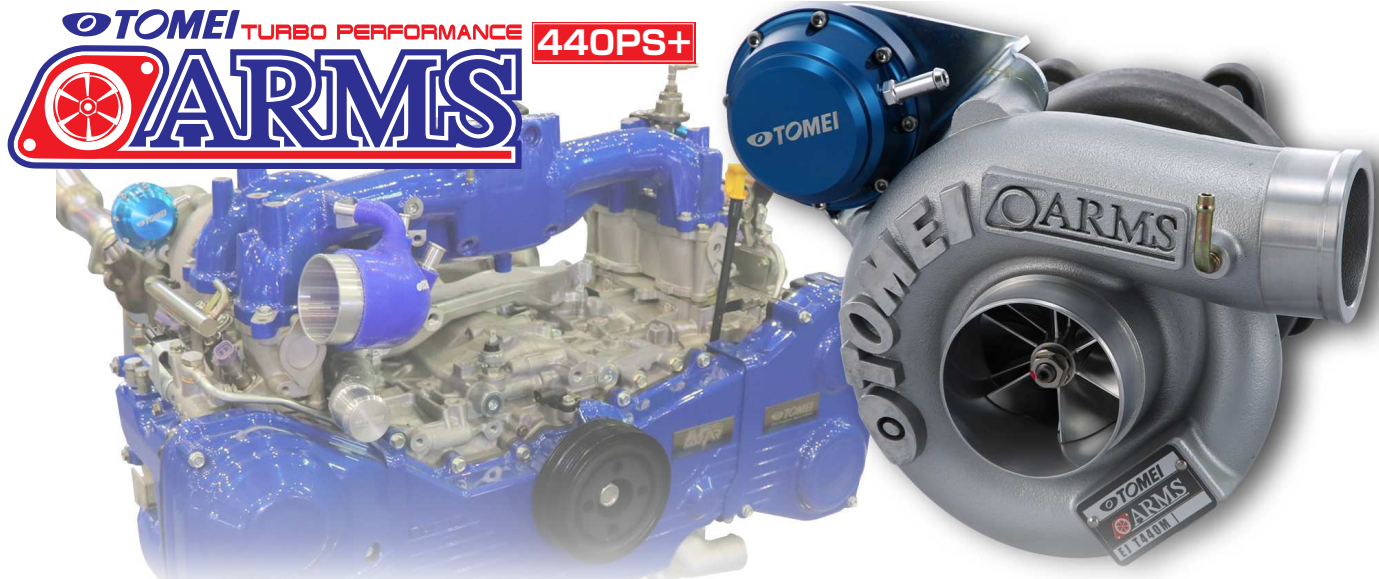


ARMS T440M TURBINE KIT for EJ SINGLE SCROLL



All new bolt-on turbo kit for EJ Single Scroll!

Engineered to achieve the best balance on EJ25 single scroll applications, as well as stroked engines with EJ22KIT / EJ26KIT.
The new forged billet compressor wheel pushes up the overall performance from low to high RPM range in addition to all the well-proven performance and balance of the previous model.



APPLICATION

IMPREZA JDM				FORESTER		
GC8	GDA	GDB	GR/GV	SF5 (STI MT)	SG5	SG9
EJ207	EJ205	EJ207	A-LINE	EJ205	EJ205	EJ255
IMPREZA USDM					WRX	
GD 01-03	GD 04-05	GD 06-07	GR 08-	GV 11-	VA 15-	
WRX	WRX	STI	STI	STI	STI	
EJ205	EJ205	EJ257	EJ257	EJ257	EJ257	

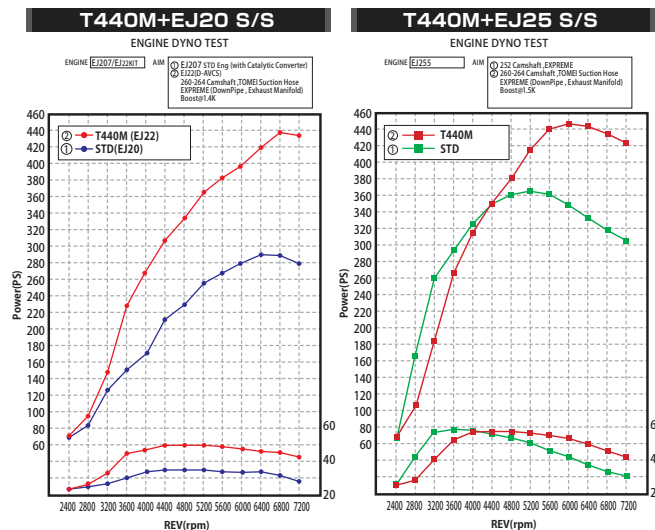
- TOMEI Turbo Suction Hose is also required on Impreza (GD#) and Forester (SG#).
- GDB Inetrcooler Duct (Subaru P/N: 21830AA102) is also required to install this turbo kit on Impreza (GDA) or Forester (SG#).
- Can be installed also to GC8 / SF5 by upgrading the turbo suction hose to a product with ID: 60mm at the turbo side end.

JPY 178,000

P/N : 173030

FEATURES

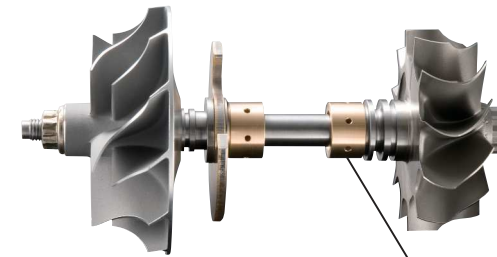
- FLAT PRIMARY EXHAUST PRESSURE**
Well balanced to achieve the seamless, smooth and linear power curve that is not too slow or too peaky at initial spool, and smoothly spools up along with the engine as it revs up. This straight-forward characteristic provides a stress-free drivability.
- STABLE BOOST AT HIGH RPM RANGE**
Improved boost stability all the way up to high RPM range versus the stock turbo which is known for a significant power drop after around 5,500 RPM, this is a huge advantage especially with a stroker motor.
- 1 YEAR WARRANTY**
The ARMS EJ T440M Turbo Kit comes with a 1 year limited warranty after the product has been registered with Tomei Powered Inc. shortly after purchase.



FEATURE & SPEC

FLOATING METAL

High quality floating journal bearing at the center shaft.



FLOATING METAL

BOLT-ON APPLICATION

Easy bolt-on installation, no modifications required.

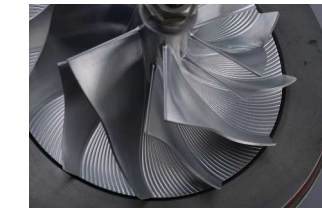


REINFORCED ACTUATOR

Remarkable stability under high boost.



WHEEL DATA

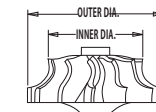


The all new, forged aluminum billet compressor wheel increases even more efficiency and at the same time reduces surging that is one of the well known problems on tuning especially with AVCS applications. Perfectly balanced to match the single scroll EJ25, as well as stroker motors such as EJ22 - EJ26.

	TRIM	INNER DIA. (mm)	OUTER DIA. (mm)	BLADES
COMPRESSOR WHEEL	56.0	56.2	75.0	6/6



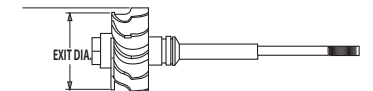
COMPRESSOR WHEEL



	TRIM	OUTER DIA. (mm)	EXIT DIA. (mm)	BLADES
TURBIN WHEEL	77.4	61.5	54.1	11



TURBIN WHEEL



Also required to install
T440M Turbo Kit on GD# / SG#

TURBO SUCTION HOSE

This product is designed to reduce the restriction of the intake air flow goes into the turbo to improve response and gain the peak power. The multi-ply structural design prevents a deformation under high loads of pressure that helps to make the most of the turbo while increasing durability and reliability as well. No adapters required for the compressor inlet port of T440M turbo.

HIGH FLOW & DURABLE



Larger flow capacity and reduced flowing resistance. Designed as straight as possibly allowed in the spot. The reinforced multi-ply design helps the entire hose to keep the shape during high boost conditions. This then assists the turbo to maintain a stable and consistent air flow.

EASY BOLT-ON



This Bolt-On Suction Hose Kit is designed to be able to install without removing the Intake Manifold for a quick and easy installation.



APPLICATION: GD#

JPY 32,000

BLACK P/N: 451004 BLUE P/N: 451002

APPLICATION: GR# /GV# /VAB ※Included: Elbow adapter

JPY 35,500

BLACK P/N: 451012 BLUE P/N: 451011

Every TOMEI ARMS TURBO KIT comes with 12-month limited warranty.
This warranty does not cover any failure or damage in the case the warranty registration has not been completed.
Please complete the registration immediately if your ARMS TURBO is not registered.

TOMEI POWERED INC.

5-4-27 Tsuruma Tokyo Machida TEL:+81-42-795-8411 FAX:+81-42-799-7851 <http://www.tomei-p.co.jp>

Prices are subjected to changes without prior notice. The images are for illustration purposes only & the color may differ from the actual product due to printing and publication errors.

詳細はコチラ <http://www.tomei-p.co.jp/>