



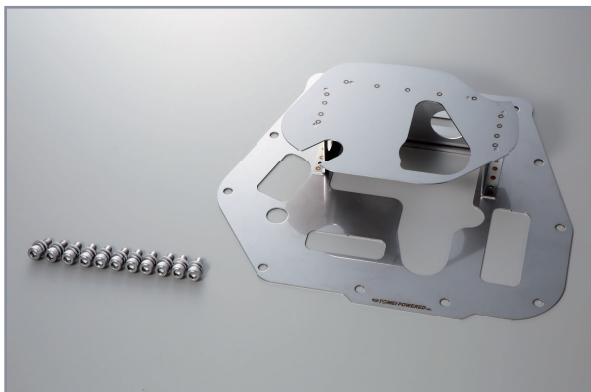
NEW  
RELEASE  
INFORMATION  
Vol.333

# OIL PAN BAFFLE PLATE for FA24DI



## Stabilize the oil supply by the multi-plated structure!

During hard acceleration, deceleration and cornering, the sudden change in inertial forces will cause the oil to jump and move around too much which causes the oil move away from the oil pickup and in turn cuts oil supply to the engine. The TOMEI baffle plate is designed to prevent this problem from happening under any situation by the multi-plated structure and help the stable oil supply at all times.

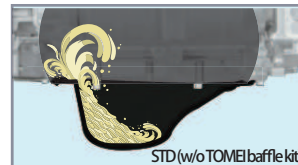


### SPEC

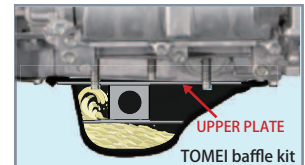
MATERIAL	SUS304
PLATE THICKNESS	1.2 mm
WEIGHT	580g

### ■ UPPER PLATE CONTROLS OIL SIDEWAYS AND UPWARDS SPLASHING

The upper block-stiffening part and the lower oil-baffling part together help the stable oil supply all the times by keeping the oil from moving around too much.

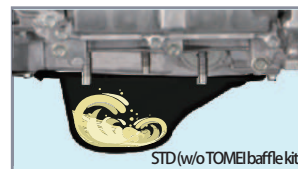


The oil jumps up towards the block side along with the oil pan shape that will cause to cut the oil supply and lower the oil pressure.

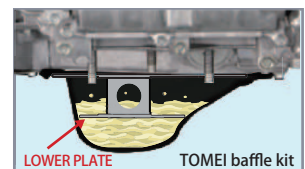


The upper plate blocks the oil jumping and keeps the oil in the oil pan that ensures the stable oil supply under any condition.

### ■ The lower plate keeps the oil at the oil pickup



The oil moves around due to the strong G-force towards the front, rear, left and right that causes air cavitation in the oil line.



The lower plate keeps the oil, that is kept in the oil pan by the upper plate, in the bottom of the oil pan where the oil pickup is.

APPLICATION: TOYOTA GR86 / SUBARU BRZ FA24DI

**JPY 26,000**

P/N:194017

**TOMEI POWERED INC.**

5-4-27 Tsuruma Tokyo Machida TEL:+81-42-795-8411 FAX:+81-42-799-7851 <http://www.tomei-p.co.jp>

■ Prices are subjected to changes without prior notice ■ The images are for illustration purposes only & the color may differ from the actual product due to printing and publication errors.