

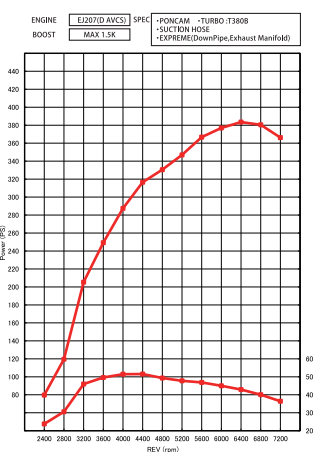
TOMEI STROKER KIT SERIES EJ22/25KIT

**Full Billet
79.0mm Stroked**

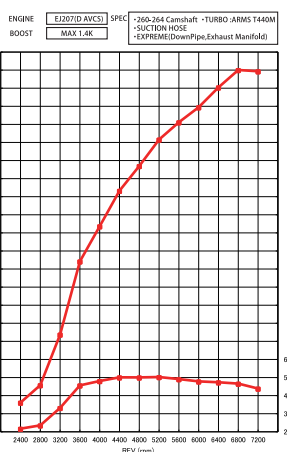


**New, stronger and lighter weight crankshaft.
All new engine kit to win the competitions!**

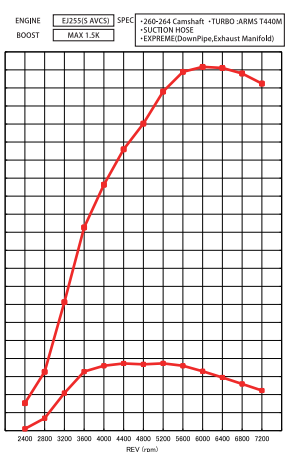
EJ20 O/S+T380B



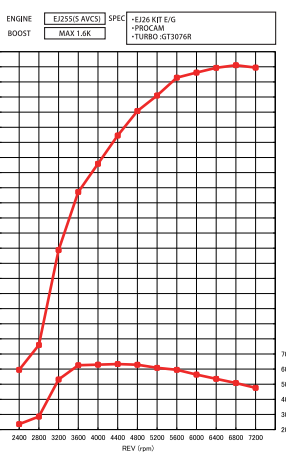
EJ22KIT+T440M



EJ25KIT+T440M



EJ26KIT+GT3076



PRODUCT	APPLICATION	PISTON SIZE	KIT P/N	JPY	WITH CONROD BEARINGS P/N	JPY
EJ22 KIT	EJ205 EJ207	Φ92.5	252007	¥398,000	250019	¥418,000
EJ25 KIT	EJ255 EJ257	Φ99.75	252008	¥398,000	250020	¥418,000

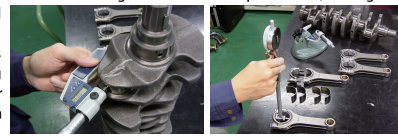
KIT CONTENTS BILLET CRANKSHAFT FORGED H-BRAM CONROD FORGED PISTON KIT

※Conrod bearings are included.



PRE MATCHED CONROD BEARING SET KITS

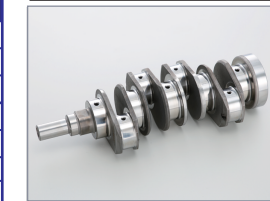
Tomei has made an option to include their Competition Bearing Series product with our kits. All the engine internals are brought to static temperature (20 degrees Celsius) and blueprinted with 0.040~0.060mm clearance bearings. This eliminates the measuring and blueprinting process for the customer, so the kit can be installed with less hassle.



FEATURE&SPEC

	EJ22	EJ25
BORE × STROKE	φ 92.5 × 79.0mm	φ 99.75 × 79.0mm
DISPLACEMENT	2123cc	2468cc
STD COMPRESSION RATIO	8.1	8.3
PISTON	BORE (STD)	φ 92.5 (φ 92.0)
	PIN Dia.	φ 23.0
	COMPRESSION CROWN VOLUME	31.0
	1st	1.2 × 3.30
	2nd	1.2 × 3.70
PISTON RING OIL	1st	1.2 × 3.45
	2nd	1.2 × 4.00
		2.0 × 2.70
MATERIAL	ALUMINUM ALLOY	ALUMINUM ALLOY
WEIGHT (STD)	498g (568g)	503g (577g)
LENGTH	130.5mm	130.5mm
CONNECTING ROD	BIG END Dia.	Diam φ 55
	Length	21.4mm
	SMALL END Dia.	Diam φ 23
	Length	21.4mm
MATERIAL	SNCM439	SNCM439
WEIGHT (STD)	550g (573g)	550g (605g)
BOLT	ARP L19	ARP L19
STROKE	79.0mm	79.0mm
MATERIAL	SNCM439	SNCM439
WEIGHT (STD)	8.0Kg (9.4Kg)	8.0Kg (9.4Kg)

■ Light weight design



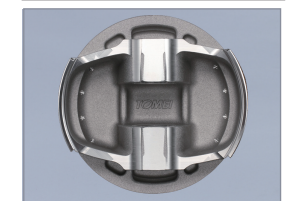
■ Incl. ARP L19 Rod Bolts



■ Designed for the best combustion



■ Forged, exclusive design for EJ



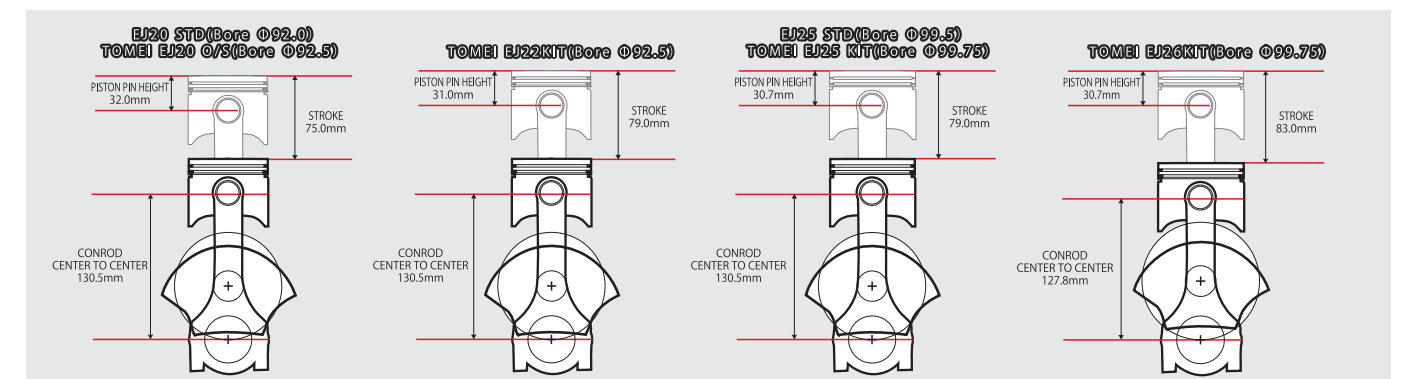
COMPRESSION RATIO REFERENCE

PRODUCT	Compression Ratio Reference (With Gasket)					GASKET BORE SIZE
	t=0.7mm	t=1.0mm	t=1.2mm	t=1.5mm	t=1.8mm	
EJ22KIT	8.2	8.0	7.9	7.7	7.6	Φ93.5
EJ25KIT	8.7	8.5	8.3	8.1	—	Φ101.2

※Calculated with EJ25 with stock combustion volume.

DISPLACEMENT COMPARISON

	EJ20 STD	TOMEI EJ22KIT	EJ25 STD	TOMEI EJ25KIT	TOMEI EJ26KIT
BORE × STROKE	Φ92 × 75.0mm	Φ92.5 × 79.0mm	Φ99.5 × 79.0mm	Φ99.75 × 79.0mm	Φ99.75 × 83.0mm
DISPLACEMENT	1994cc	2123cc	2457cc	2468cc	2593cc



**BORE Φ99.75
STROKE 83.0mm
2593CC**

TOMEI STROKER KIT SERIES EJ26KIT

**Power, Torque, Response & Total Blance.
A Fresh, New Stroker Kit Design to Suit a Wide Range Of Needs.**



KIT CONTENTS BILLET FULL COUNTERED CRANKSHAFT FORGED H-BEAM CONROD FORGED PISTON KIT

PRODUCT	APPLICATION	PISTON SIZE	KIT P/N	JPY	WITH CONROD BEARINGS P/N	JPY
EJ26 KIT	EJ255 EJ257	Φ99.75	252001	¥418,000	250015	¥438,000

※Conrod bearings are included.

COMPRESSION RATIO REFERENCE

PRODUCT	PISTON SIZE	Compression Ratio Reference (With Gasket)				GASKET BORE SIZE
		t=0.7mm	t=1.0mm	t=1.2mm	t=1.5mm	
EJ26KIT	Φ99.75	8.5	8.3	8.2	8.0	Φ101.2

※The above compression ratio is based on the combustion chamber volume of 50cc.

TOMEI POWERED INC.

5-4-27 Tsuruma Tokyo Machida TEL:+81-42-795-8411 FAX:+81-42-799-7851 <http://www.tomei-p.co.jp>

■ Prices are subjected to changes without prior notice ■ The images are for illustration purposes only & the color may differ from the actual product due to printing and publication errors.

<http://www.tomei-p.co.jp/>