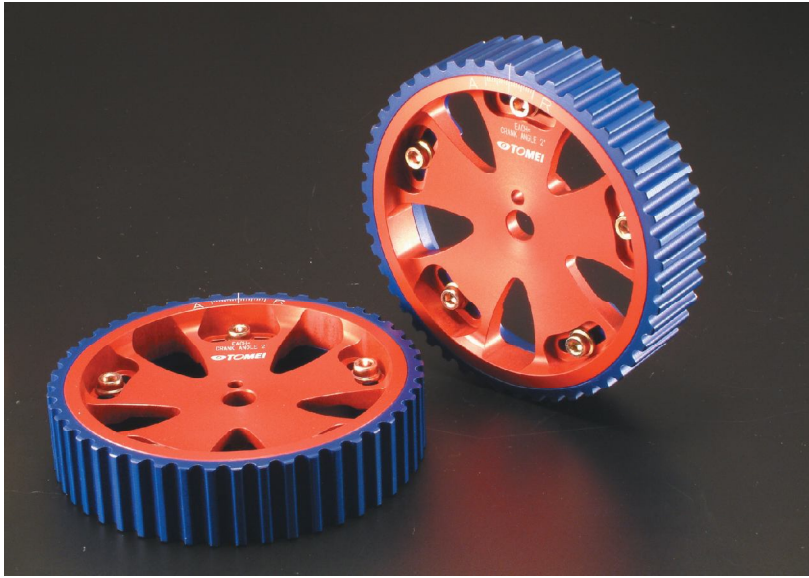




**NEW
RELEASE
INFORMATION**
Vol.56-4

ADJUSTABLE PULLEYS

THE ALL DURALMIN 4G63 ADJUSTABLE PULLYS



■ ALL DURALMIN SUPER LIGHT WEIGHT TYPE

The A2017 material was chosen for its ultra light weight and high rigid properties for the pulley and the gear part.

STANDARD: 517g / TOMEI 497g

■ PRECISION

A special manufacturing method was adopted for the gear and pulley section which allowed us to maintain precision with each product every time. This allows the secure holding of the timing belt on the gear itself, less wear rate and minimal operational noise.

■ SUPER HIGH RIGIDITY (HARD ANODIZED)

Our Adjustable Cam Pulleys are finished with the Hard Anodized Color for the highest grade of durability possible. This special treatment improves the products looks and durability. By improving the durability it helps prevent loosing your timing settings and from strange noises to occur. The tough color anodizing also makes the product scratch resistant.

■ STANDS OUT IN THE ENGINE BAY

The hard anodized color chosen for the cam pulley serves the purpose for added durability and to improve the appearance in your engine bay to give the showroom finish.

■ USER FRIENDLY OPERATION

We chose to design an easy to use simple scale system to aid with allowing easy and quick adjustments when needed.

MSRP: \$200.00 (USD)

APPLICATION	ENGINE	PART NO.	CAM + PULLEY PART NO.	NEW MSRP
LANCER EVO III	4G63	152011	CAM PART NO. +153028	ADJUSTABLE PULLEY (EACH)
GALANT VR-4 (E39A)				\$200.00 (USD)
RVR (N23W)		152012	CAM PART NO. + 153029	CAM + PULLEY
LANCER EVO IV-VIII				\$1,040.00 (USD)
AIR TREK (CU2W)				LANCER EVO IX
LANCER EVO IX			CAM PART NO. + 152012	

(IN/EX Are the Same)

ADJUSTABLE PULLEY RELATED PARTS

VALVE SPRINGS

* EVO 8 & 9 Requires EVO 7 Valve Springs.



ENGINE	MAX LIFT	PART NO.	MSRP	NOTES
4G63	~11.8mm	163034	\$370.00 (USD)	<ul style="list-style-type: none"> • OVAL CORE WIRE • HIGH LIFT TYPE

Spec.

ENGINE	WIRE DIA.	SET LENGTH	LIFT LENGTH	SUITED LIFT	SET LOAD (kgf)	LIFT LOAD (kgf)	RPM (REF.)	MATERIAL	TREATMENT
4G63	Horizontal 3.6 x Vertical 4.50	39.6mm	27.1mm	11.50	33.6±6%	82.0±6%	8000	SWOSC-VT	Nitride

SOLID PIVOTS

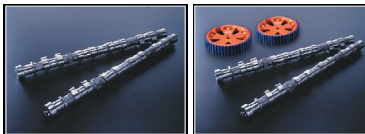


- Improved Response,
- Designed for high end RPM use,
- For Special Cams & Valve Springs
- Simple Conversion to Solid
- For All Serious Competition Use.
- For Big Power Cars

APPLICATION	ENGINE	PART NO.	MSRP
LANCER EVO IX	4G63	163039	\$960.00 (USD)

* Requires Camshafts for the Solid Conversion and Special Valve Springs.

CAMSHAFTS



APPLICATION	IN/EX SET MSRP	CAM + PULLEY MSRP	MSRP
LANCER EVO IV	\$640.00 (USD)	\$1,040.00 (USD)	\$320.00 (USD)
LANCER EVO IX		\$ 840.00 (USD)	

TOMEI POWERED USA INC.

13 ORCHARD SUITE 107, LAKE FOREST, CA 92630 USA

TEL: +1-949-855-6577 FAX: +1-949-855-6525 URL: <http://www.tomeiusa.com>

■ Prices are subjected to changes without prior notice ■ The images are for illustration purposes only & the color may differ from the actual product due to printing and publication errors.