



R&D
INFORMATION
Vol.01 12.12

TURBINE OUTLET PIPE

for SR20DET



**Scheduled
Release Date**
Mid of Oct, 2013

**Taking
Pre-Orders Now**

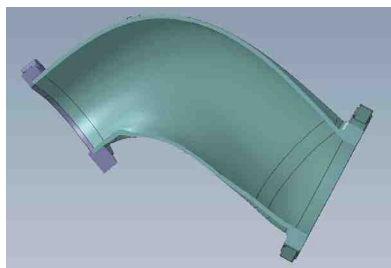


**Large
Capacity of
950cc**

3 Inch Pipe

**Highly
Efficient Wide
Mouth Design**

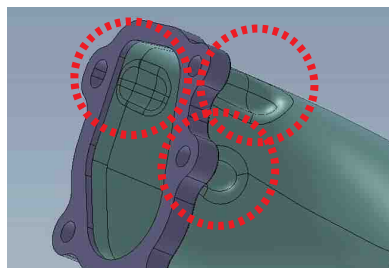
**Precision
Lost-Wax
Casting**



One piece flange design on the front pipe side. Realizing smoother exhaust flow without sacrificing capacity.



O₂ Sensor Boss Included



Ease of installation with friendly wide mouth design with enough clearance for tools.

SPEC	Material	Pipe Diameter (Φ)	Volume(cc)
Current Model	SUS304	Φ73.2	765cc
NEW	SUS304	Φ76.3	950cc

Part No.	Application	Compatible Exhaust Manifold
423001	PS13,RPS13(With EAI)	EXPREME & S14 Type
423002	PS13,RPS13 (Without EAI) S14,S15 (Without EAI)	Compatible with both Stock manifold, Bolt on aftermarket manifolds

※ Both S14 & S15 don't have the EAI mechanism in S14/S15. So please check carefully and order accordingly.
※ Most aftermarket exhaust manifold s are the S14 type.

Expected MSRP \$190.00 (USD)

**The current model
has been discontinued.
Thank you for your
continued support.**



Part No.

193101

193060

— This information is during development stages. There may be some changes to the actual product. —

TOMEI POWERED USA INC.

13 ORCHARD SUITE 107, LAKE FOREST, CA 92630 USA

TEL : +1-949-855-6577 FAX : +1-949-855-6525 www.tomeiusa.com

■ Prices are subjected to changes without prior notice ■ The images are for illustration purposes only & the color may differ from the actual product due to printing and publication errors.